



Carriage with "Pivot Handle" Instructions For Use Disassembly & Assembly

imp

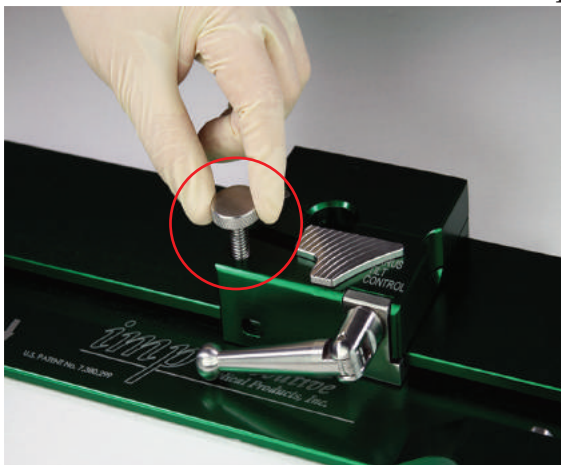
De Mayo V2[®] Knee Positioner[®]

⚠ KEEP ALL COMPONENTS OF EACH KNEE POSITIONER TOGETHER. Do NOT MIX & MATCH THE COMPONENTS OF DIFFERENT POSITIONERS.



Disassembly

1. Unscrew and remove the E-stop.



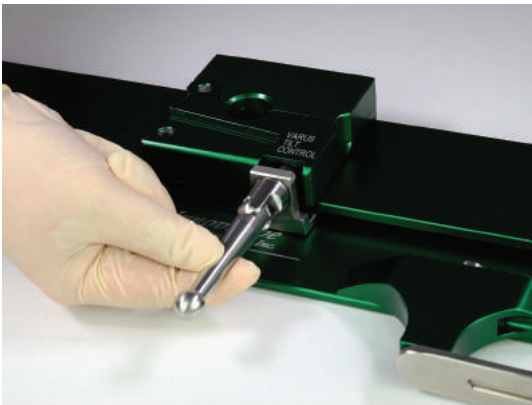
Remove the E-stop by turning it counter clockwise.



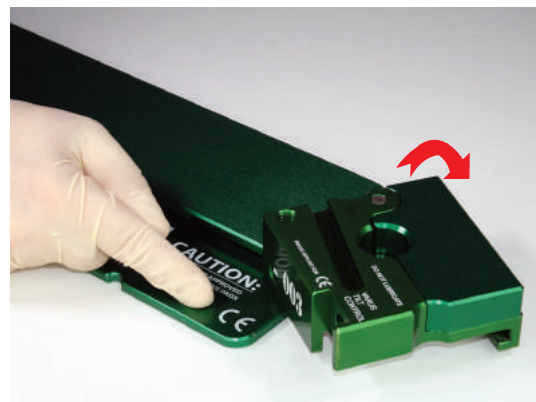
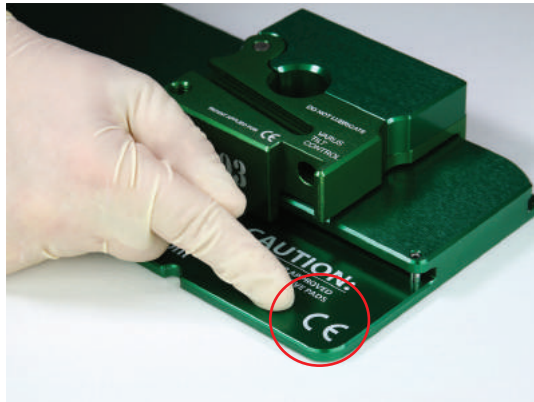
2. Remove the boot and then slide and remove the varus tilt control.



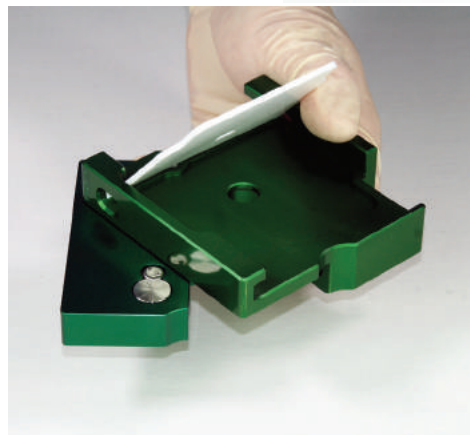
3. Straighten, and then turn the Handle counter clockwise to remove the Handle.



4. Slide the carriage to the "CE" mark end of the base plate, and rotate the carriage off

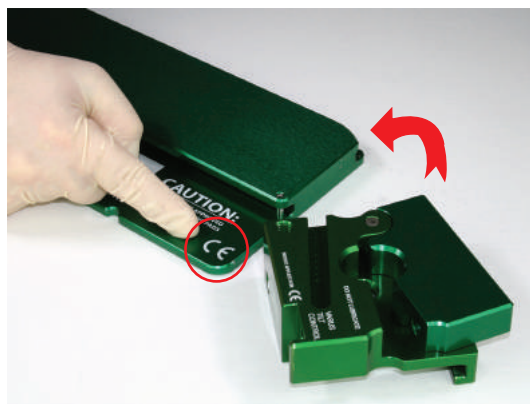


The carriage will open, but does not disassemble any further.



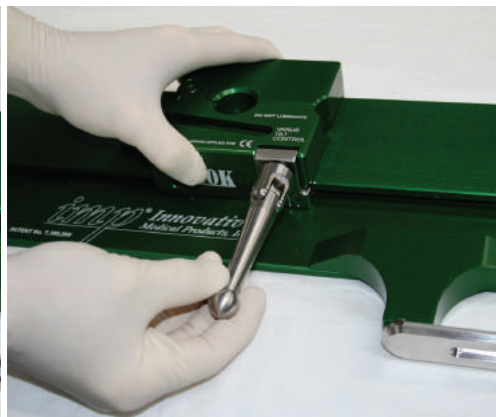
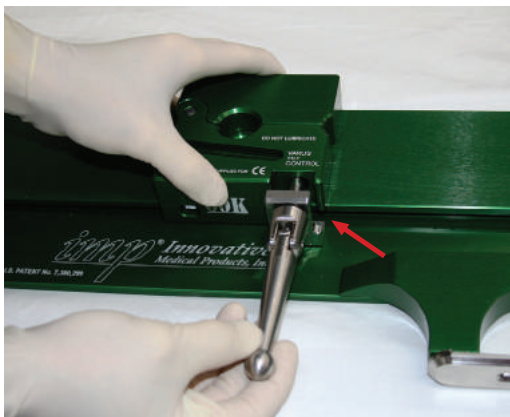
Assembly

1. With the hole for the handle facing you, rotate and slide the carriage onto the "CE" mark end of the base plate.



Slide the carriage around the curve of the base plate to fully seat it.

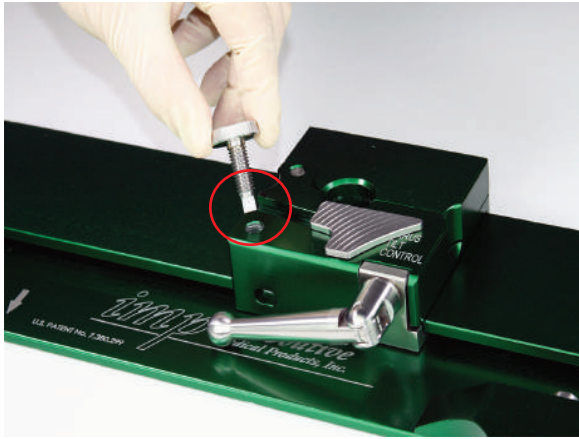
2. With one hand holding the carriage on the top rail of the base plate, thread the handle into the carriage with the "L" foot under the rail turning the handle clockwise. The handle should easily thread into the carriage. Do NOT try to force the handle. If you meet resistance, back the handle out and start over.



3. Slide the varus tilt lock onto the carriage and slide all the way to the open position.



4. Thread the E-Stop into the carriage.



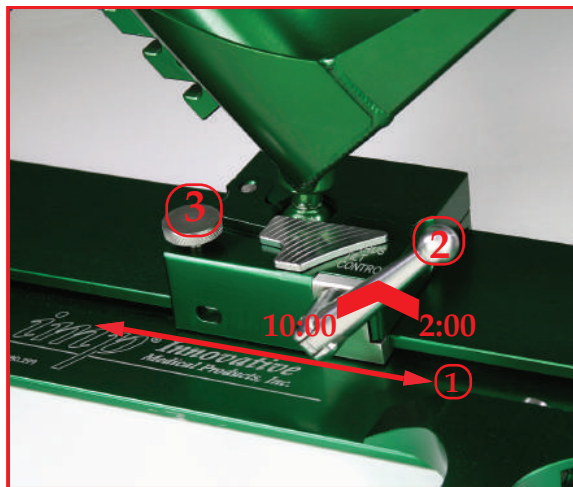
5. Proper location of the Handle.
Start with the Handle in the unlocked (10 o'clock) position and,



insert the boot. Tighten the Handle to the locked (2 o'clock) position.



Do NOT mix & match the components with different ID etchings



Set Up Test Procedure



1. Check to ensure the carriage slides freely.
2. With the boot inserted, check to ensure that the handle unlocks and locks at 10 o'clock & 2 o'clock.
3. Check to ensure the E-stop is unlocked.

